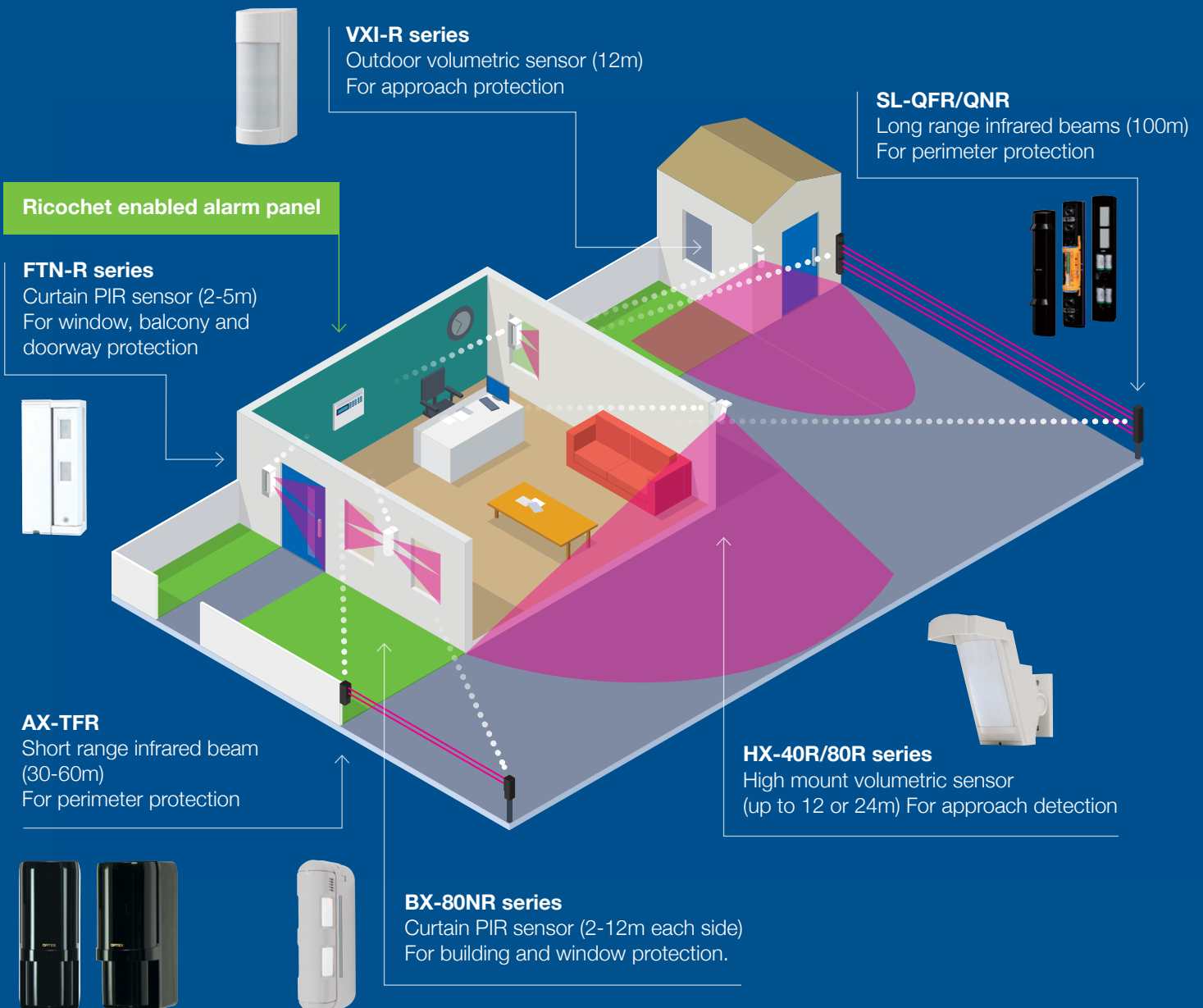


Combine OPTEX battery powered outdoor sensors with Ricochet[®] Mesh technology

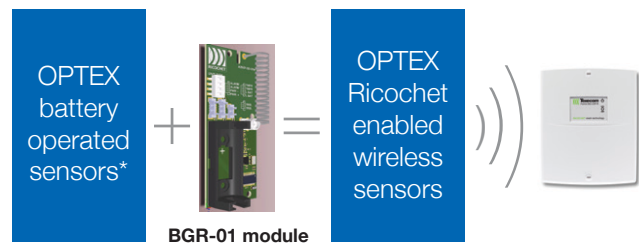
Create a complete wireless security system by linking outdoor detection to your Ricochet enabled alarm panels.



How to add OPTEX outdoor sensors to your wireless Ricochet enabled alarm panel

A Ricochet wireless module, the BGR-01, has been designed to connect any OPTEX outdoor battery-powered PIRs and active infrared beams to a Ricochet Premier Elite alarm panel, ver. 3.01 or higher. The panel will recognise the OPTEX sensors by model as soon as they are connected. The BGR-01 module fits inside the sensor's backbox and comes with the battery (CR123A) and all necessary cables required to connect it to the sensor.

The BGR-01 module is available to purchase from OPTEX's distribution channels as a separate item in UK and Ireland. For more information please contact us.





*See the list of the compatible outdoor battery operated sensors below





OPTEX outdoor sensors compatible with the Ricochet enabled BGR01 wireless module

The BGR-01 module can be purchased separately and integrated with all OPTEX outdoor battery-operated sensors listed below. For full functionality, it is recommended to install two BGR-01 per active infrared beam set, one for the transmitter and one for the receiver. Please note that two modules are necessary for the infrared beams, one for the transmitter and one for the receiver.

Battery powered active infrared beams (Two BGR-01 modules will be needed per beam set)

Sensors	Detection range	Channel selectable frequencies	Device signalling to the wireless module				Tamper		
			Alarm	Low battery	Environmental output (DQ)				
AX-100TFR	30m	●	●	●	●	●			
AX-200TFR	60m	●	●	●	●	●			
SL-350QFR	100m	●	●	●	●	●			
SL-350QNR	100m	–	●	●	●	●			
								AX series	SL series

Battery powered outdoor PIRs

Sensors	Detection range	Type of detection	Combined PIR/ microwave	Small animal tolerance	Device signalling to the wireless module				Tamper		
					Alarm	Low battery	Anti-masking				
FTN-R	2-5m	Curtain	–	●	●	●	–	●			
FTN-RAM			–	●	●	●	●				
BX-80NR	1-12m on each side (24m max)	Curtain	–	●	●	●	–	●			
VXI-R	12m-90°	volumetric	–	●	●	●	–	●			
VXI-RAM	12m-90°	volumetric	–	●	●	●	●	●			
VXI-DRAM	12m-90°	volumetric	●	●	●	●	●	●			
HX-40RAM	12m-85°	Volumetric (high mount)	–	●	●	●	●	●			
HX-80NRAM	24m narrow	Curtain (high mount)	–	●	●	●	●	●			
									VXI series	HX series	